

ON WASHINGTON

WASHINGTON STREET HISTORIC DISTRICT

Available for Lease

68 Washington Street, Norwalk, CT

OVERVIEW

TYPE

Corner Turnkey Restaurant

SIZE

3,593 sf (Ground Floor)
4,620 sf (Basement)

BASE RENT

\$32/ground floor sf

TRIPLE NET

\$11/ground floor sf

COTENANCY

Mecha Noodle Bar, Salon Etre, Oishi, Beadworks, Saltwater, Donovan's, Il Posto, Tablao, and more!

COMMENTS

Easy access to I-95 and 7 Connector, walk to SoNo Train Station, 5 Private and Municipal Parking Garages within walking distance. Over 20 new construction apartment buildings in South Norwalk!

CENSUS

88,816 people

The Washington Street Historic District is a highly preserved landmarked community at the convergence of new construction apartment buildings, hotels, a gorgeous waterfront, and a 24/7 eat, shop, and live culture.



@onwashingtonst
www.onwashingtonst.com



For Further Information
203-984-3490
laura@simondavidrealestate.com

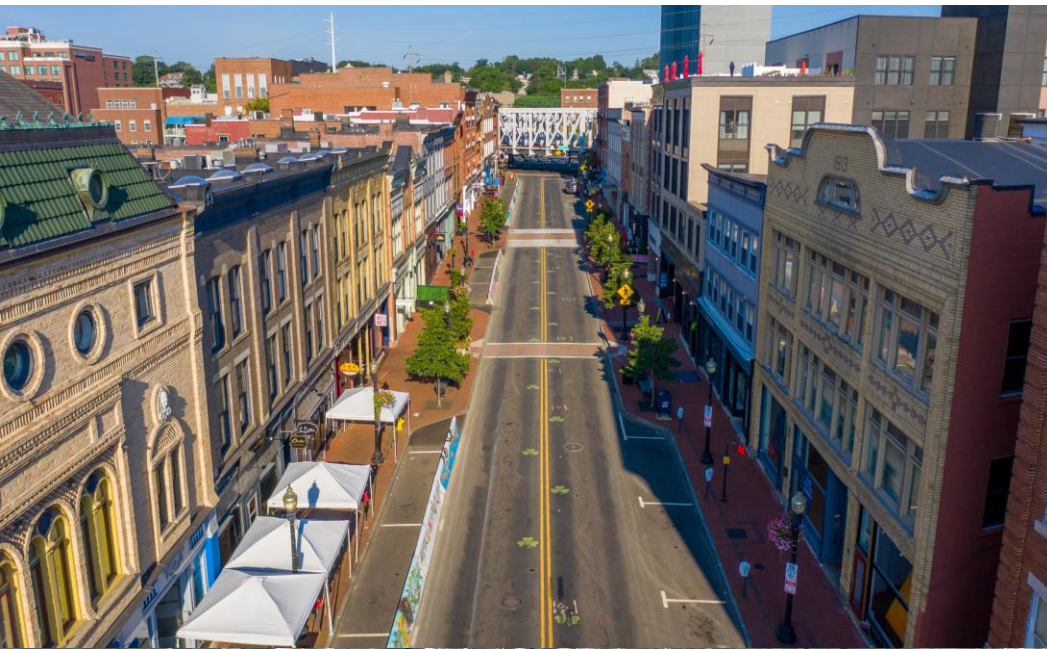
Broker Cooperation Welcomed



Welcome to the Washington Street Historic District.



Welcome to the Washington Street Historic District.



68 Washington Street | South Norwalk, CT



68 Washington Street | South Norwalk, CT



68 Washington Street | South Norwalk, CT



68 Washington Street | South Norwalk, CT

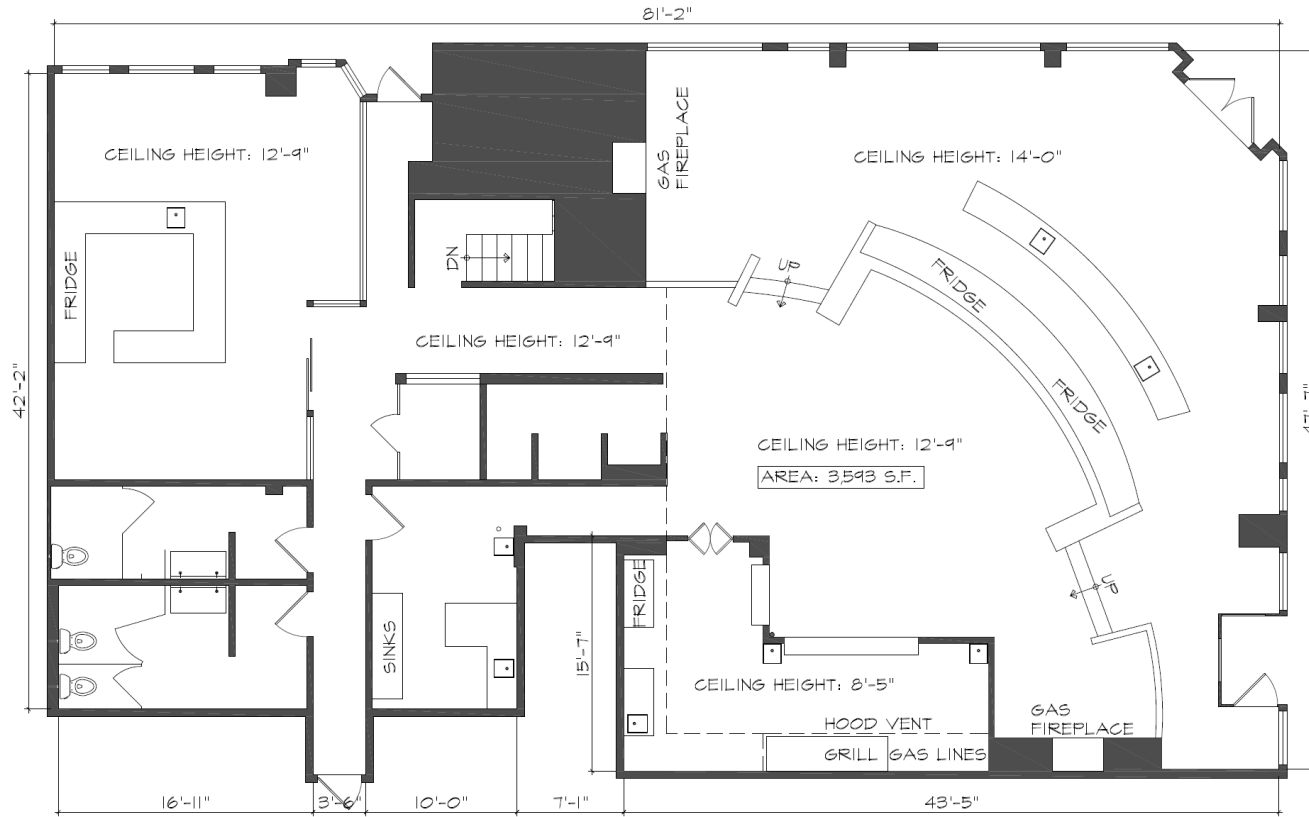


68 Washington Street | South Norwalk, CT



68 Washington Street | South Norwalk, CT

Any dimensions provided are approximate and should not be used for construction



TENANT SPACE SURVEY

1 FIRST FLOOR PLAN

SCALE: 1/8" = 1'-0"

AGW SONO Partners LLC

97-77 Queens Boulevard,
Suite 620
Rego Park, NY 11374

68 WASHINGTON STREET
NORWALK, CT. 06854

68 Washington Street | South Norwalk, CT

